



City of New York
Parks & Recreation

The Arsenal
Central Park
New York, New York 10021

Adrian Benepe
Commissioner

June 22, 2006

Mr. Kevin Burns
Chief of Grants
New York State Office of Parks, Recreation and Historic Preservation
Empire State Plaza, Agency Building No. 1
Albany, NY 12238

JUN 23 2006 AM 11:12

Re: Macomb's Dam Park, Bronx County

Dear Mr. Burns:

The Parks Department is proposing a conversion of that portion of Macomb's Dam Park previously improved with a grant under the federal Land and Water Conservation Fund ("LWCF") Act to permit the construction of a new Yankee Stadium at that location. Consistent with the LWCF Act and regulations, we are proposing replacement parcels, located at the site of the existing Yankee Stadium and on a portion of waterfront property previously associated with the Bronx Terminal Market. Both replacement parcels are proposed to be developed as recreational parkland to replace that being displaced on the conversion parcel.

Attached are maps for the following parcels:

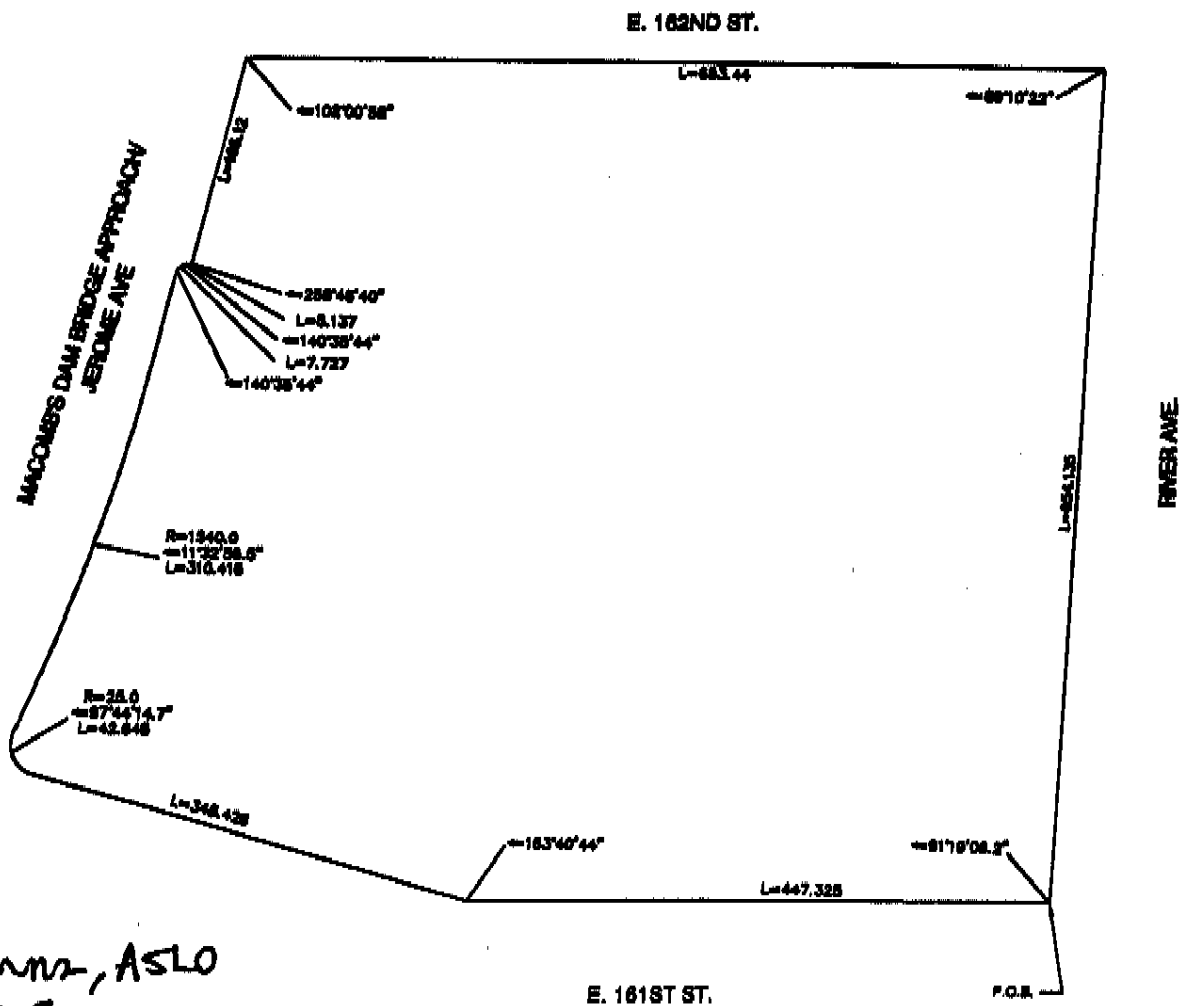
- 1) Macomb's Dam Park (parcel improved with LWCF grant resources): 10.673 acres
- 2) Replacement Parcel #1: Harlem River Waterfront Park: 6.427 acres
- 3) Replacement Parcel #2 Heritage Field: 10.029 acres

If you have any questions regarding the maps or the Yankee Stadium Redevelopment Project, please call Joshua Laird, Assistant Commissioner for Planning and Natural Resources, at (212) 360-3402.

Sincerely,


Adrian Benepe

MACOMB'S DAM PARK *Converted Parcel*



Kevin Burns, ASLO
NYS OPRHP
6/27/06

AREA: 10.673 acres

Adrian Benepe
Adrian Benepe
Commissioner
New York City Department of Parks & Recreation

6/22/06
Date

new site for Yankee Stadium

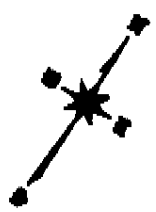
TECHNICAL DESCRIPTION

In the matter of describing a park on Block 2492, between East 161st Street and East 162nd Street and between Macomb's Dam Bridge Approach/Jerome Avenue and River Avenue, in the Borough of the Bronx, in accordance with Map No. 13109.

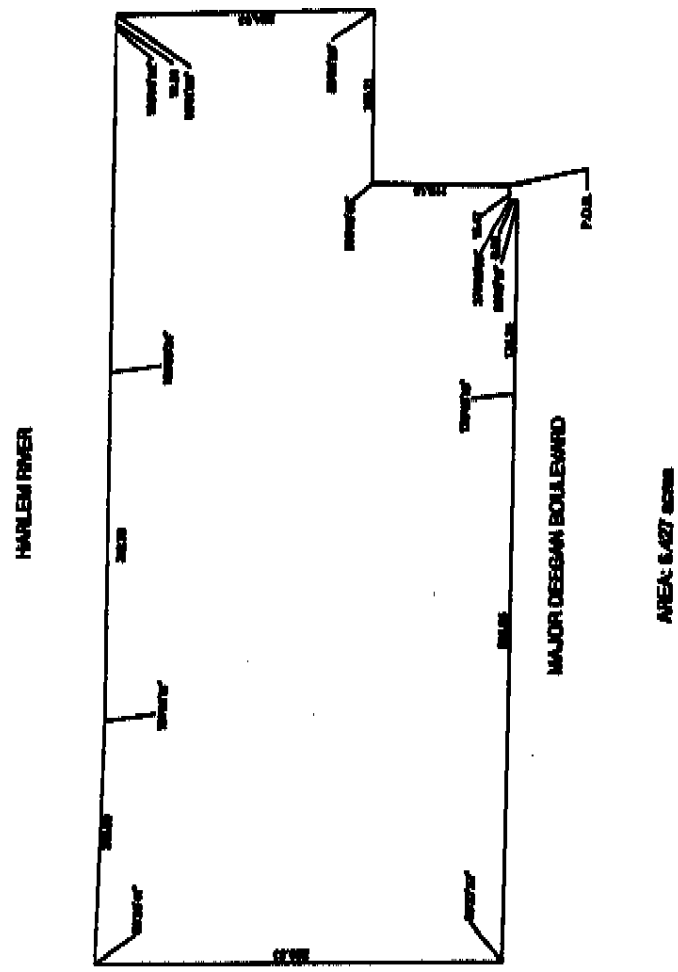
BEGINNING at the intersection of the northerly line of East 161st Street and the westerly line of River Avenue, as those streets are heretofore laid out on the City Map:

- 1) Thence westerly, along the northerly line of E. 161st Street, a distance of 447.325' to a point;
- 2) Thence northwesterly, along a line forming an internal angle of 163°40'44" with the previous course, a distance of 348.426' to a point of curvature;
- 3) Thence northerly, along a curve to the right with a central angle of 97°44'14.7" and a radius of 25.0', a distance of 42.646' to a point of reverse curvature;
- 4) Thence northerly, along a curve to the left with a central angle of 11°32'56.5" and a radius of 1540.0', a distance of 310.416' to a point of tangency;
- 5) Thence northerly, along the tangent line, a distance of 68.005' to a point;
- 6) Thence northeasterly, along a line forming an internal angle of 140°35'44" with the previous course, a distance of 7.727' to a point;
- 7) Thence easterly, along a line forming an internal angle of 140°35'44" with the previous course, a distance of 5.137' to a point;
- 8) Thence northerly, along a line forming an internal angle of 258°48'40" with the previous course, a distance of 166.12' to a point;
- 9) Thence easterly, along a line forming an internal angle of 102°00'58" with the previous course, a distance of 653.44' to a point;
- 10) Thence southerly, along a line forming an internal angle of 89°10'22" with the previous course, a distance of 654.135' to the point or place of **BEGINNING**.

PARCEL #1: HARLEM RIVER WATERFRONT PARK *Replacement Property*



RAMP A



Ken Burns ASLO
NYS DPRHP
6/27/06

EAST 180TH STREET

Adrian Benepe

6/22/06

Adrian Benepe
Commissioner
New York City Department of Parks & Recreation

Date

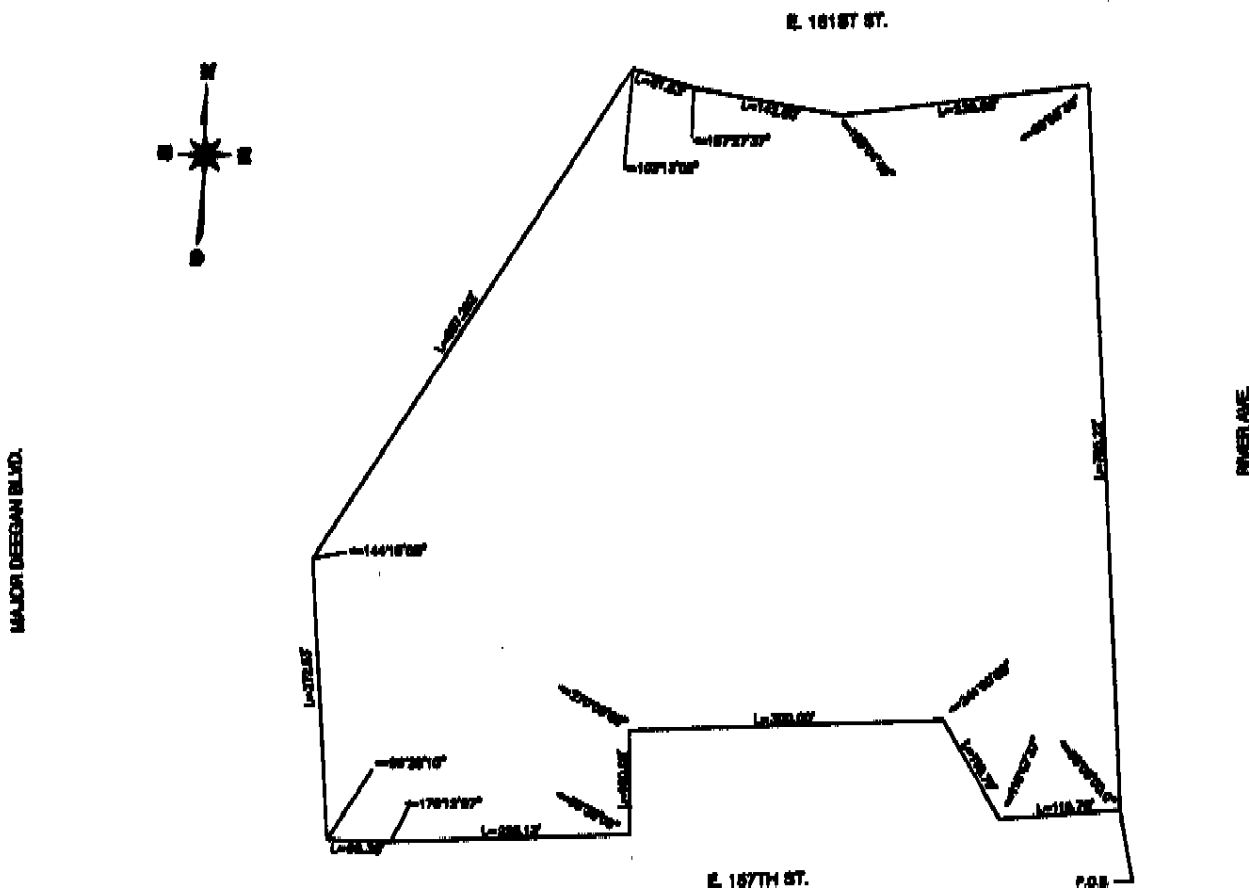
*Waterfront property***TECHNICAL DESCRIPTION**

In the matter of describing a waterfront park on Block 2539, between Ramp A of the Major Deegan Expressway and East 150th Street and between Major Deegan Boulevard and the Harlem River, in the Borough of the Bronx, in accordance with Map No. 13115.

BEGINNING at a point on the westerly line of Major Deegan Boulevard, said point lying 179.30' southerly of the intersection of the southerly line of Ramp A of the Major Deegan Expressway and the westerly line of Major Deegan Boulevard, as those streets are heretofore laid out on the City Map:

- 1) Thence southerly, along the westerly line of Major Deegan Boulevard, a distance of 16.47' to a point;
- 2) Thence easterly, along a line forming an internal angle of 270°00'00" with the previous course, a distance of 6.82' to a point;
- 3) Thence southerly, along a line forming an internal angle of 90°15'19" with the previous course, a distance of 173.30' to a point;
- 4) Thence southerly, along a line forming an internal angle of 179°43'10" with the previous course, a distance of 506.53' to a point;
- 5) Thence westerly, along a line forming an internal angle of 89°27'57" with the previous course, a distance of 356.03" to a point;
- 6) Thence northerly, along a line forming an internal angle of 89°26'41" with the previous course, a distance of 215.09' to a point;
- 7) Thence northerly, along a line forming an internal angle of 181°06'11" with the previous course, a distance of 312.78' to a point;
- 8) Thence northerly, along a line forming an internal angle of 180°00'24" with the previous course, a distance of 309.03' to a point;
- 9) Thence northerly, along a line forming an internal angle of 180°09'22" with the previous course, a distance of 12.25' to a point;
- 10) Thence easterly along a line forming an internal angle of 90°01'05" with the previous course, a distance of 224.93' to a point;
- 11) Thence southerly, along a line forming an internal angle of 89°58'20" with the previous course, a distance of 155.11' to a point;
- 12) Thence easterly, along a line forming an internal angle of 268°00'45" with the previous course a distance of 119.15 to the point or place of **BEGINNING**.

PARCEL #2: HERITAGE PARK *Replacement Property*



AREA: 10.029 acres

Tim Bunn, ASLO
 NYS OPRHP
 7/12/06

Adrian Benepe

7/7/06

Adrian Benepe
 Commissioner
 New York City Department of Parks & Recreation

Date

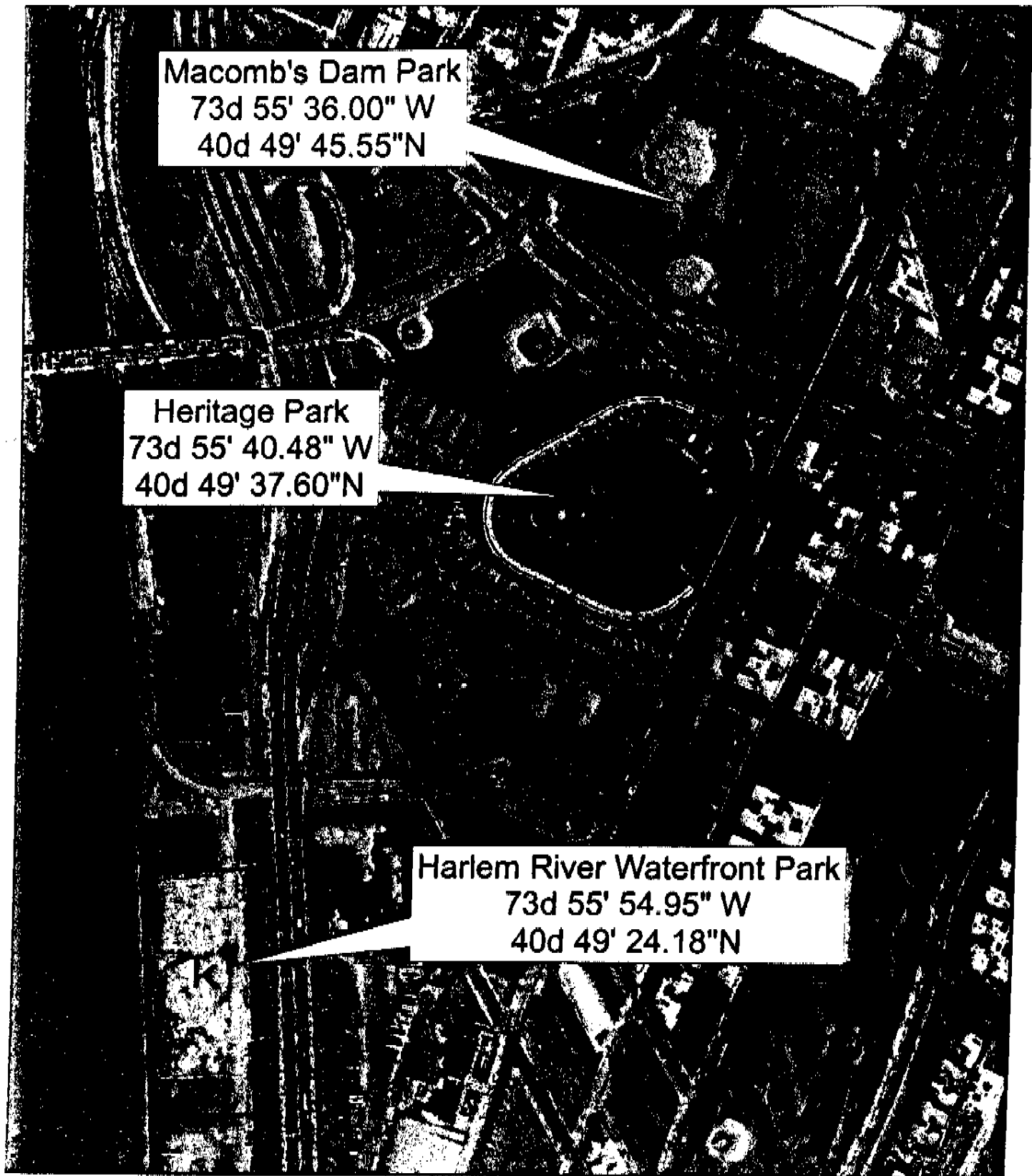
2 young yankee

TECHNICAL DESCRIPTION

In the matter of describing a Park Addition on Block 2491, between East 157th Street and East 161st Street and between Major Deegan Boulevard and River Avenue, the Borough of the Bronx, in accordance with Map No. 13113.

BEGINNING at the intersection of the northerly line of East 157th Street and the westerly line of River Avenue, as those streets are heretofore laid out on the City Map:

- 1) Thence, easterly, along the northerly line of East 157th Street, a distance of 115.70' to a point;
- 2) Thence northwesterly, along a line forming an internal angle of $116^{\circ}47'37''$ with the previous course, a distance of 110.79' to a point;
- 3) Thence westerly, along a line forming an internal angle of $241^{\circ}00'00''$ with the previous course, a distance of 300.00' to a point;
- 4) Thence southerly, along a line forming an internal angle of $270^{\circ}00'00''$ with the previous course, a distance of 100.02' to a point;
- 5) Thence westerly, along a line forming an internal angle of $89^{\circ}35'06''$ with the previous course, a distance of 226.13' to a point;
- 6) Thence westerly, along a line forming an internal angle of $176^{\circ}12'07''$ with the previous course, a distance of 60.38' to a point;
- 7) Thence northerly, along a line forming an internal angle of $96^{\circ}25'10''$ with the previous course, a distance of 272.83' to a point;
- 8) Thence northeasterly, along a line forming an internal angle of $144^{\circ}19'05''$ with the previous course a distance of 557.29' to a point;
- 9) Thence southeasterly, along a line forming an internal angle of $103^{\circ}13'08''$ with the previous course, a distance of 61.63' to a point;
- 10) Thence southeasterly, along a line forming an internal angle of $187^{\circ}27'37''$ side with the previous course, a distance of 142.80' to a point;
- 11) Thence easterly, along a line forming an internal angle of $198^{\circ}04'40''$ with the preceding course, a distance of 235.56' to a point;
- 12) Thence southerly, along a line forming an internal angle of $86^{\circ}55'30''$ with the previous course, a distance of 705.22' to the point or place of BEGINNING.



Maccomb's Dam Park
73d 55' 36.00" W
40d 49' 45.55"N

Heritage Park
73d 55' 40.48" W
40d 49' 37.60"N

Harlem River Waterfront Park
73d 55' 54.95" W
40d 49' 24.18"N

Coordinates of Yankee Stadium Parcels

Park boundary lines are approximate.

Coordinate system: NAD 1983 State Plane New York Long Island FIPS 3104 Feet.