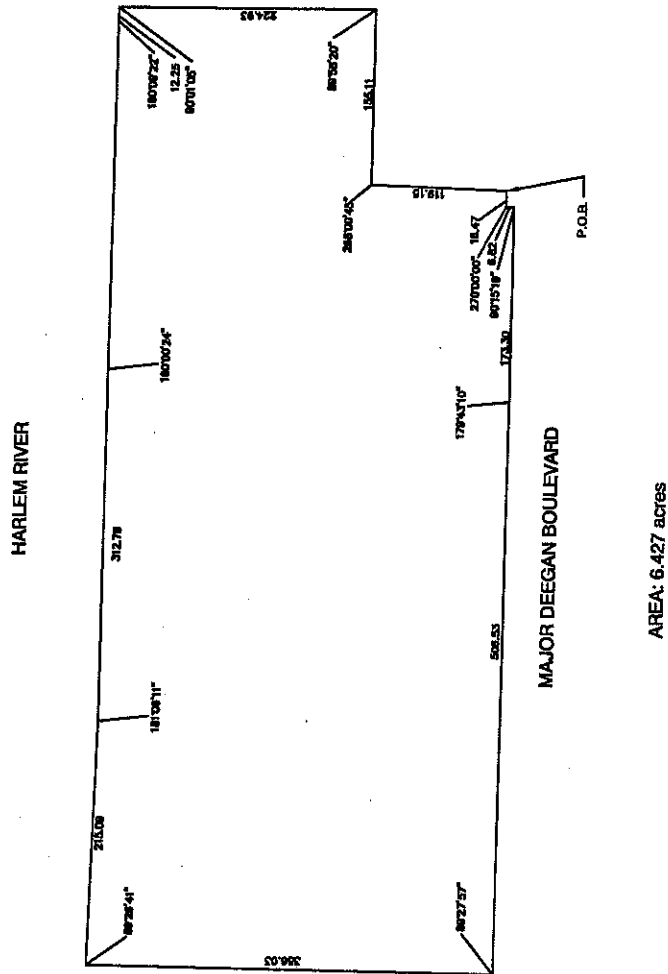


PARCEL #1: HARLEM RIVER WATERFRONT PARK
Replacement Property
 36-00776 E



RAMP A



Ken Burn ASLO
NYS OPRHP
6/27/06

EAST 150TH STREET

Adrian Benepe

Adrian Benepe
 Commissioner
 New York City Department of Parks & Recreation

6/22/06

Date

36-00 776E

Waterfront property
Replacement property

TECHNICAL DESCRIPTION

In the matter of describing a waterfront park on Block 2539, between Ramp A of the Major Deegan Expressway and East 150th Street and between Major Deegan Boulevard and the Harlem River, in the Borough of the Bronx, in accordance with Map No. 13115.

BEGINNING at a point on the westerly line of Major Deegan Boulevard, said point lying 179.30' southerly of the intersection of the southerly line of Ramp A of the Major Deegan Expressway and the westerly line of Major Deegan Boulevard, as those streets are heretofore laid out on the City Map:

- 1) Thence southerly, along the westerly line of Major Deegan Boulevard, a distance of 16.47' to a point;
- 2) Thence easterly, along a line forming an internal angle of 270°00'00" with the previous course, a distance of 6.82' to a point;
- 3) Thence southerly, along a line forming an internal angle of 90°15'19" with the previous course, a distance of 173.30' to a point;
- 4) Thence southerly, along a line forming an internal angle of 179°43'10" with the previous course, a distance of 506.53' to a point;
- 5) Thence westerly, along a line forming an internal angle of 89°27'57" with the previous course, a distance of 356.03" to a point;
- 6) Thence northerly, along a line forming an internal angle of 89°26'41" with the previous course, a distance of 215.09' to a point;
- 7) Thence northerly, along a line forming an internal angle of 181°06'11" with the previous course, a distance of 312.78' to a point;
- 8) Thence northerly, along a line forming an internal angle of 180°00'24" with the previous course, a distance of 309.03' to a point;
- 9) Thence northerly, along a line forming an internal angle of 180°09'22" with the previous course, a distance of 12.25' to a point,
- 10) Thence easterly along a line forming an internal angle of 90°01'05" with the previous course, a distance of 224.93' to a point;
- 11) Thence southerly, along a line forming an internal angle of 89°58'20" with the previous course, a distance of 155.11' to a point;
- 12) Thence easterly, along a line forming an internal angle of 268°00'45" with the previous course a distance of 119.15 to the point or place of BEGINNING.