

Stormwater & GI – Wed. 11.4.15 CB8/BCEQ

Water Working Group of the
Environment and Sanitation Committee of Bronx Community Board 8 & the
Bronx Council for Environmental Quality

TOUR WITH THE NYC DEP GREEN INFRASTRUCTURE TEAM

Tour Guides

Karen Argenti, BCEQ, HRWG

Christina Taylor, ED FVCP, BCEQ

Phoebe Mankiewicz, BCEQ HRWG VISTA Volunteer

11 am Amalgamated Area A

Doris Spencer, Amal

Al Brown, Amal

Council Member Andrew Cohen

12 pm Riverdale Neighborhood House Area B

Dan Eudene, ED RNH

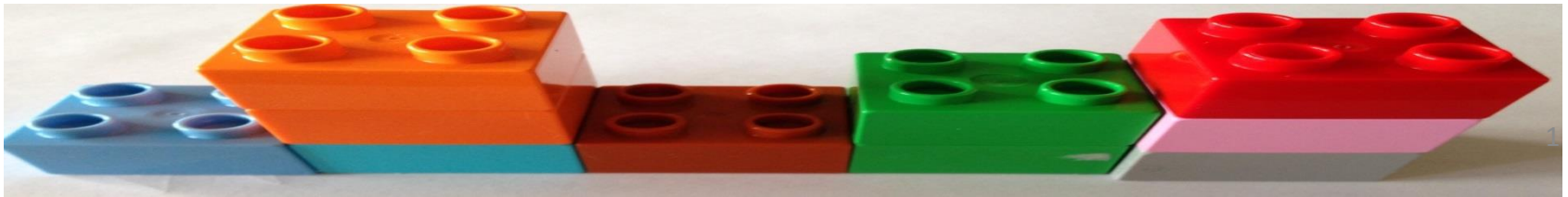
Laura Spalter, CB 8

Robert Spalter

Dan Padernacht, Chair CB 8

12:30 pm Van Cortlandt Park Weir and Wetland Area C

Karen and Christina



C

12:30 – 1 pm
Van Cortlandt Park
Weir and wetlands
(at the Lake)

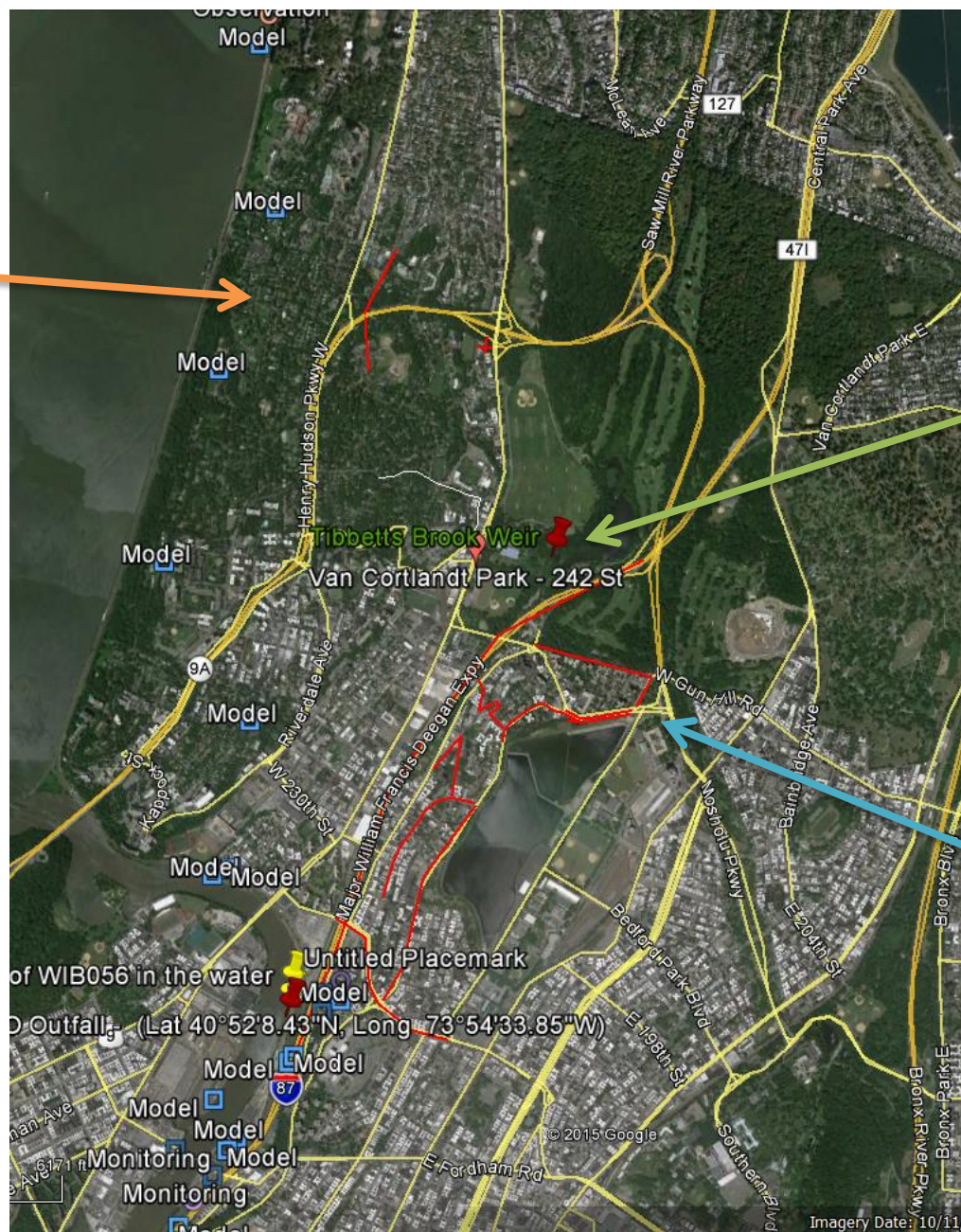
A

11 – 11:30 am
Amalgamated
X from St. Patricks

B

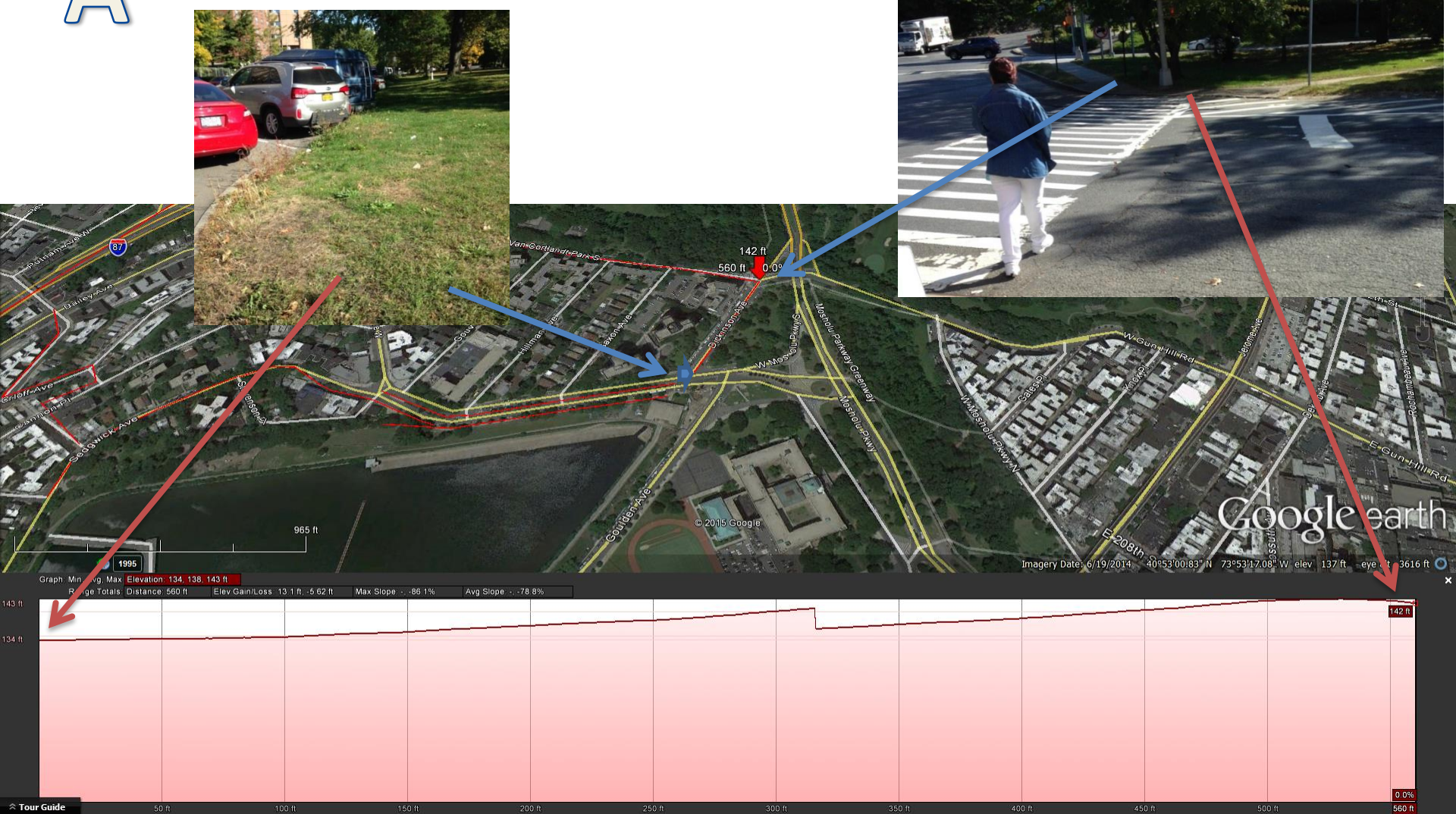
12 – 12:15 pm
Mosholu Avenue
In front of
Riverdale
Neighborhood
House

WI-056



A

Dickenson Avenue starting from Sedgwick (132 ft) to VCPS (142 ft)



A

Van Cortlandt Park South starting from Dickenson (142 ft) to Gale (82 ft) & then to Bailey (20 ft) where it floods around 225th Street

Stormwater is so fast and fierce that it goes down hill and makes a left turn at Gale Place. Along VCPS there is room for Enhanced Tree Pits on both sides of the street. DEP could partner with Amalgamated to capture additional rainfall by adapting from using grass to other plantings, green roofs, rain barrels, etc. Consider this opportunity to partner with a great housing cooperative.

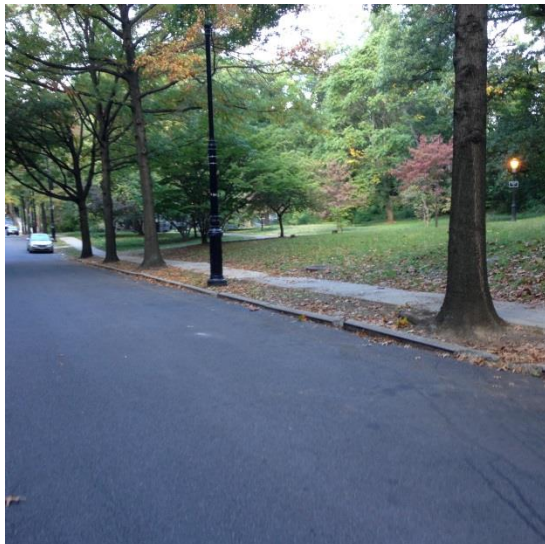
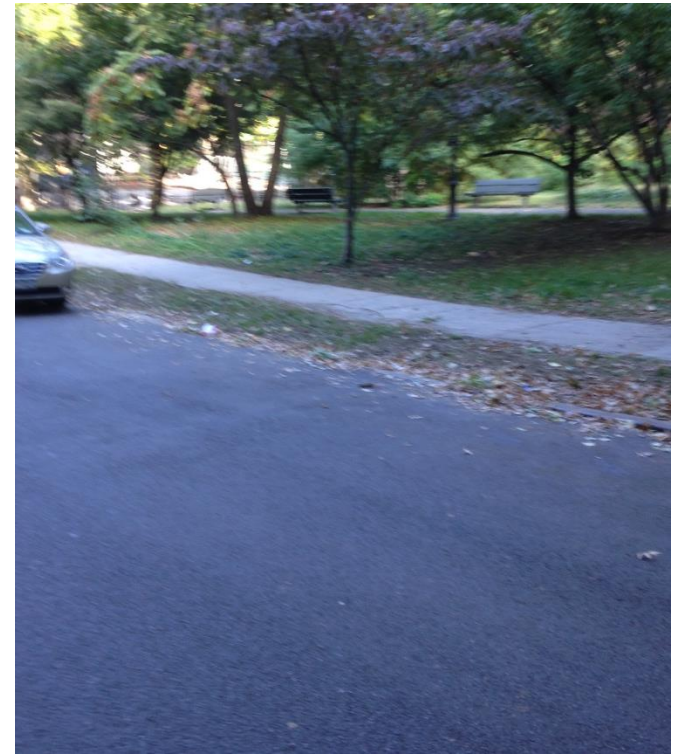
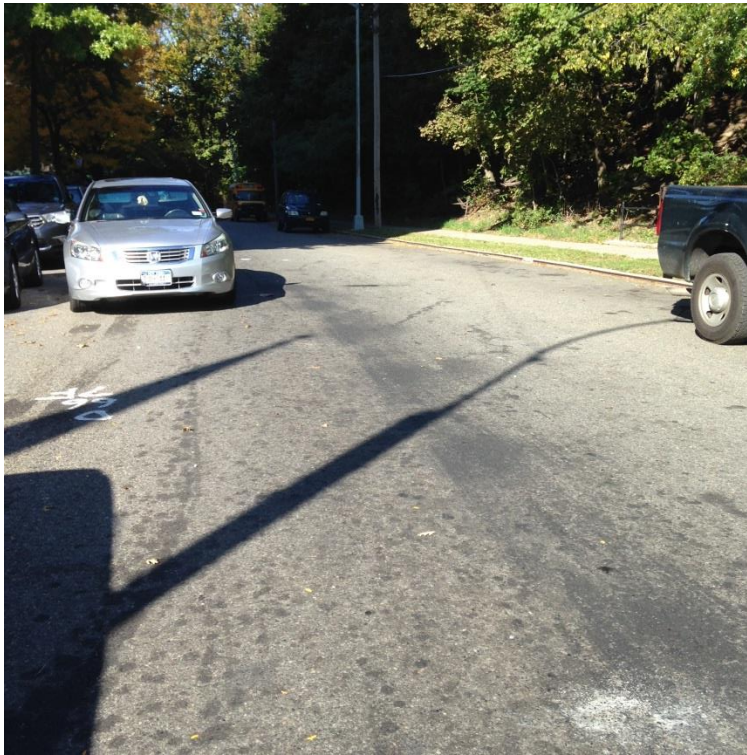


A

This is by St. Patrick's Home. It is another opportunity to do something creative on the street, with local institutions adopting the care.



A



This is VCP. Its plain to see the park side has its stressors which could be fixed with some bioswales, enhancing the tree pits, and other available options.



A



Catch basin falls in



Street is worn out

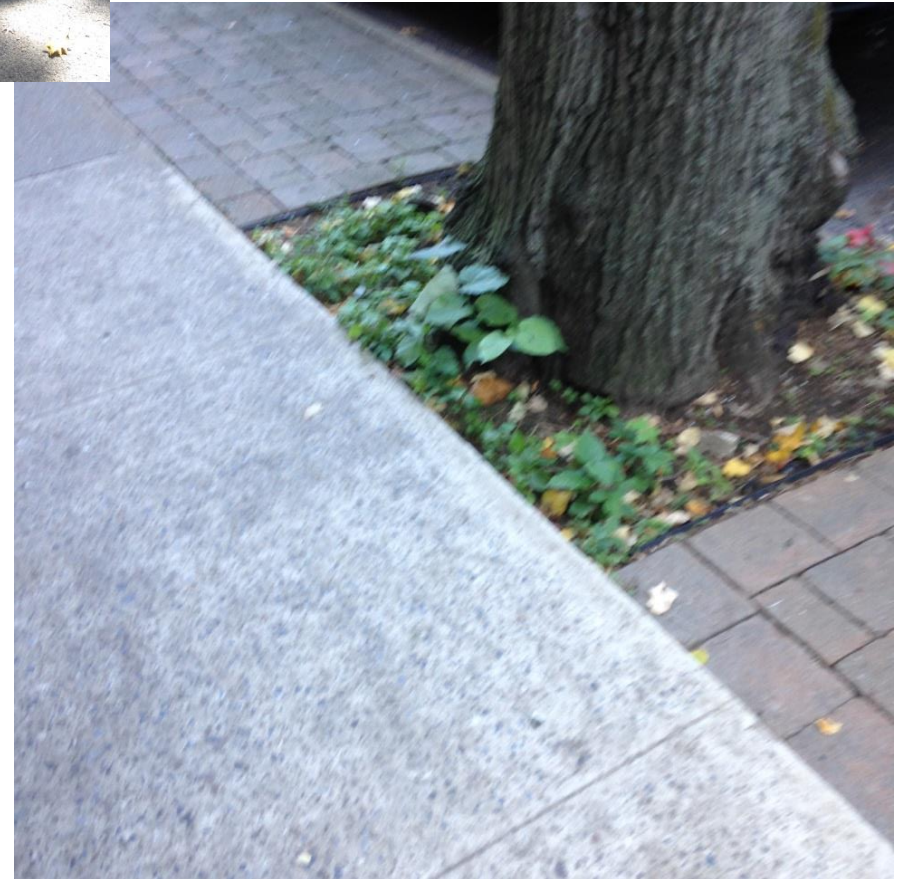


This is on private property alongside of one of the buildings on VCPS. With a little bit of help, this could capture more rain and look nicer, too.

A

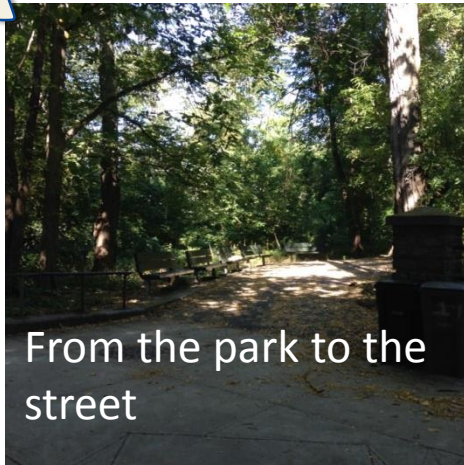


Below is a tree pit begging to be enhanced before it lifts the sidewalk.



This is on the edge of the children's park in VCP. The runoff is evident even in this year of low rainfall.

A



From the park to the street



Street levels off but the force is so strong it turns



The damage is evident.
The cost is shared with the NYC DOT



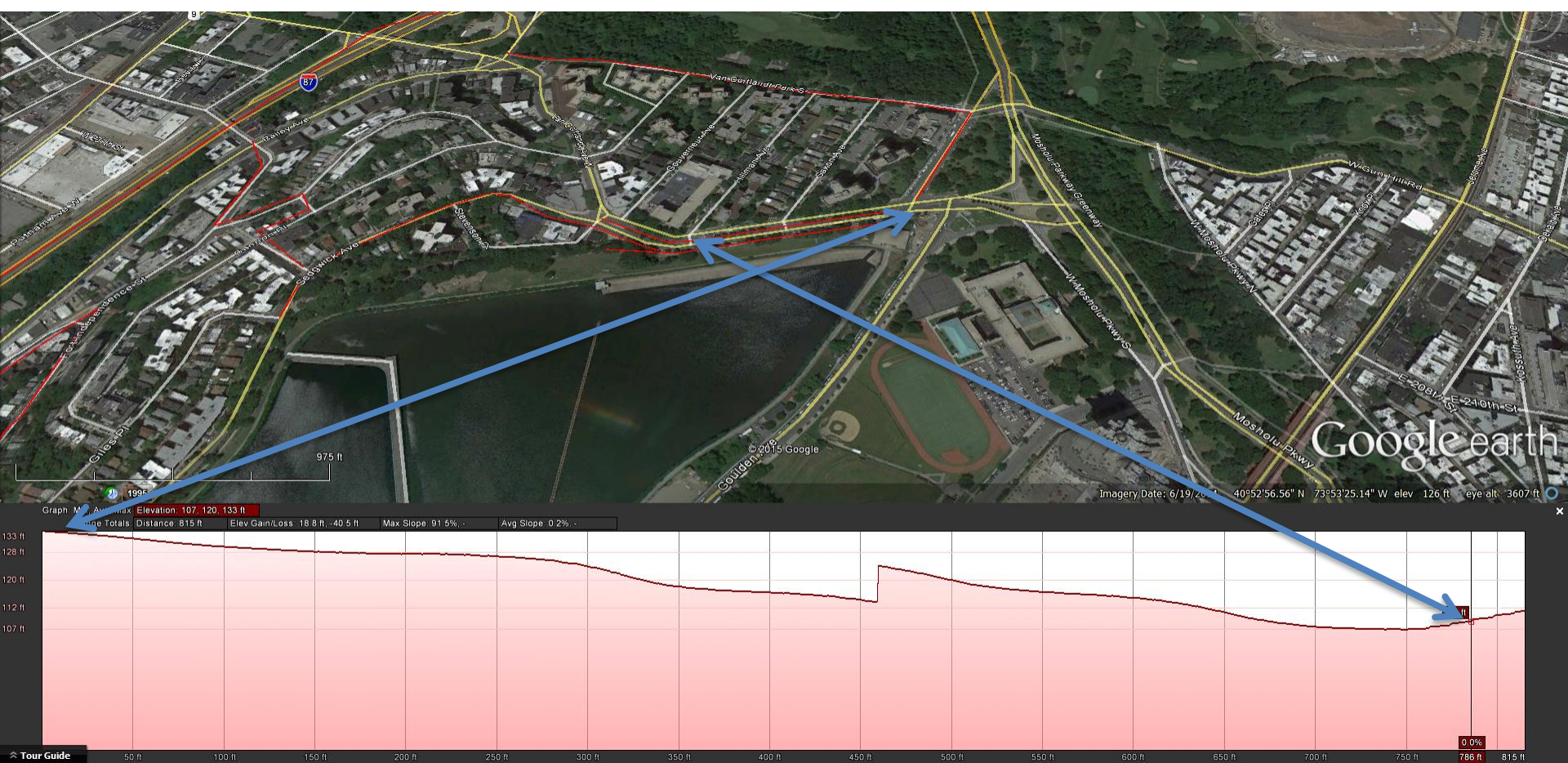
Drain is completely clogged.
This is on the park Side.



Going down the steps to Bailey (20 ft)

A

Sedgwick Avenue East from Hillman (134 ft) to Dickenson (142 ft)

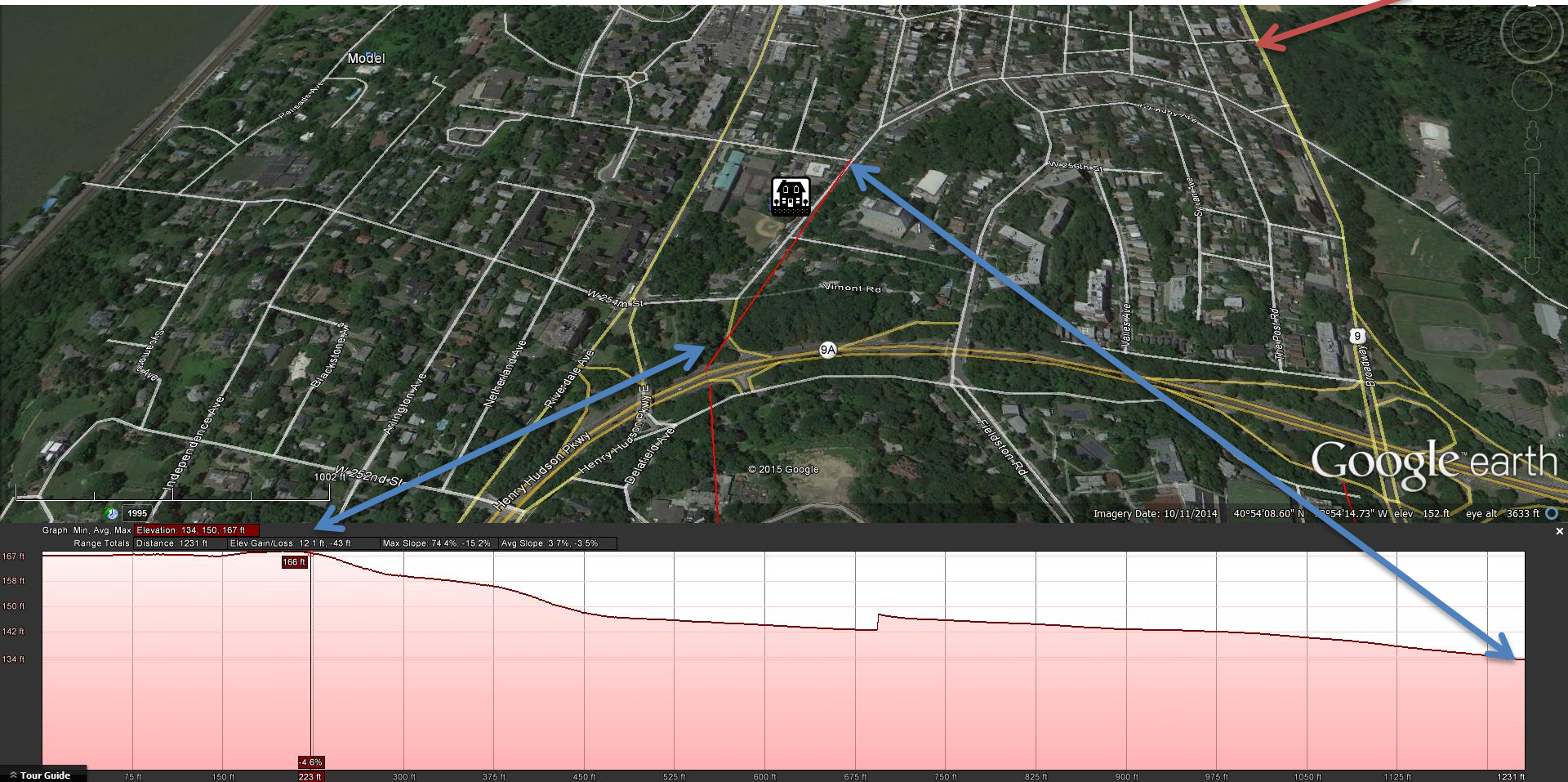


On our walk back to your vehicles, we pass along the sidewalk of the JPR. Here we find plenty of places for retro-enhanced tree pits and new ones to capture rainfall.

B

Mosholu Avenue from Route 9A (165 ft) to 256th St (134 ft) to Broadway at 260 and Mosholu where it floods

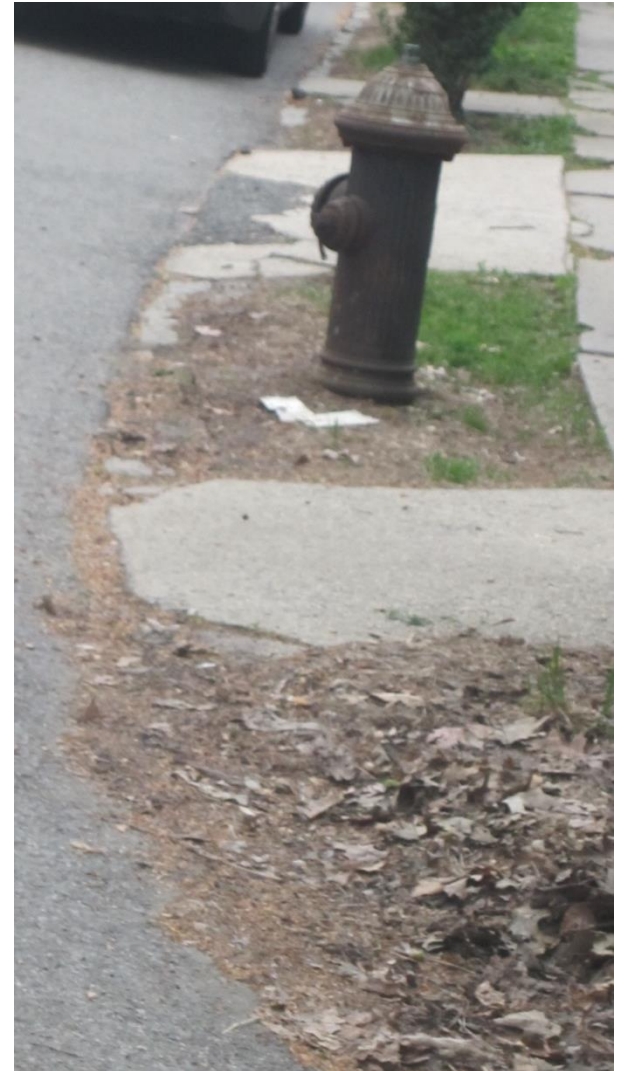
West 260 St.

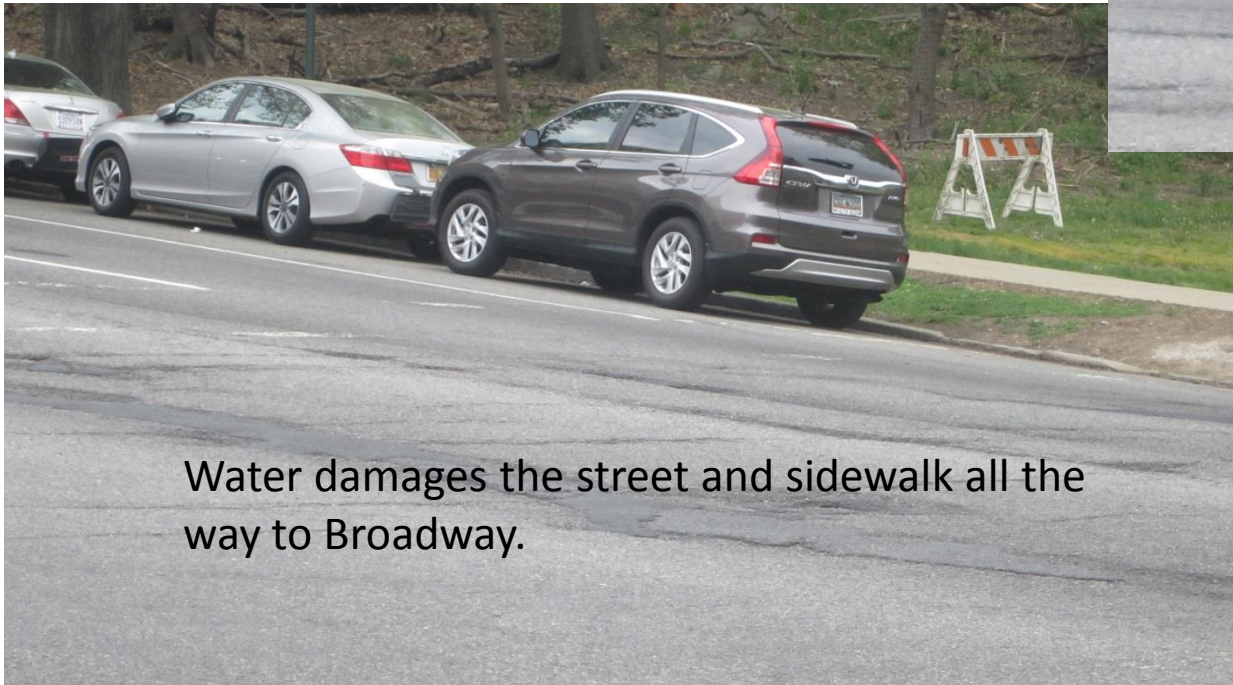
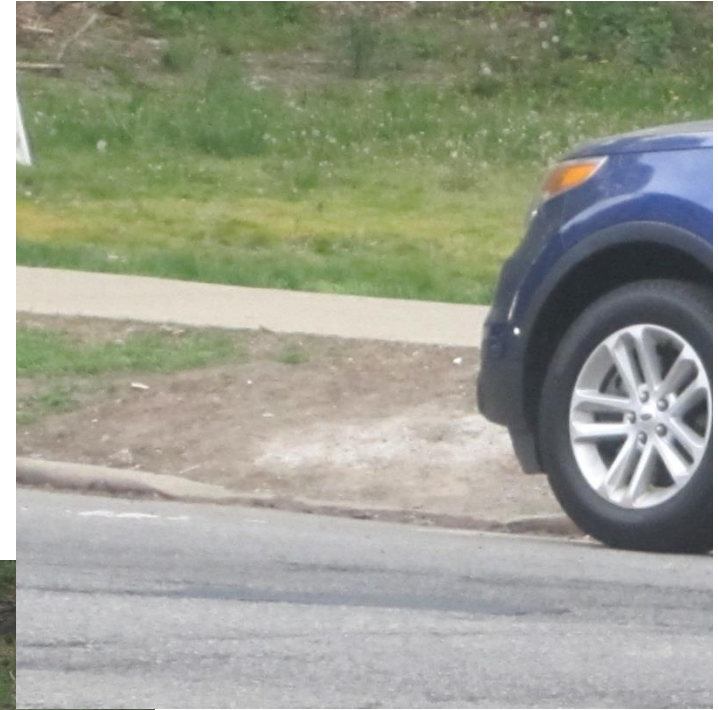


B



Stormwater runs down W. 260th Street



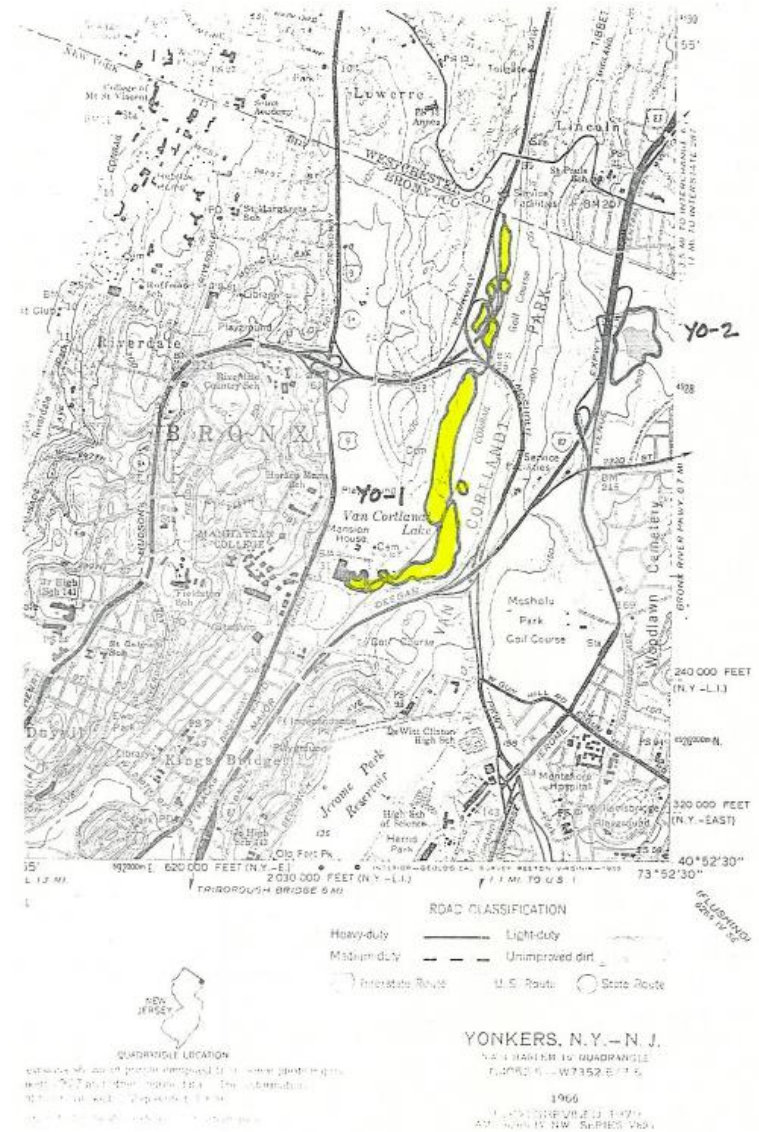


Water damages the street and sidewalk all the way to Broadway.

Broadway at 230th Street has water damage even though the roadbed is raised in the middle.

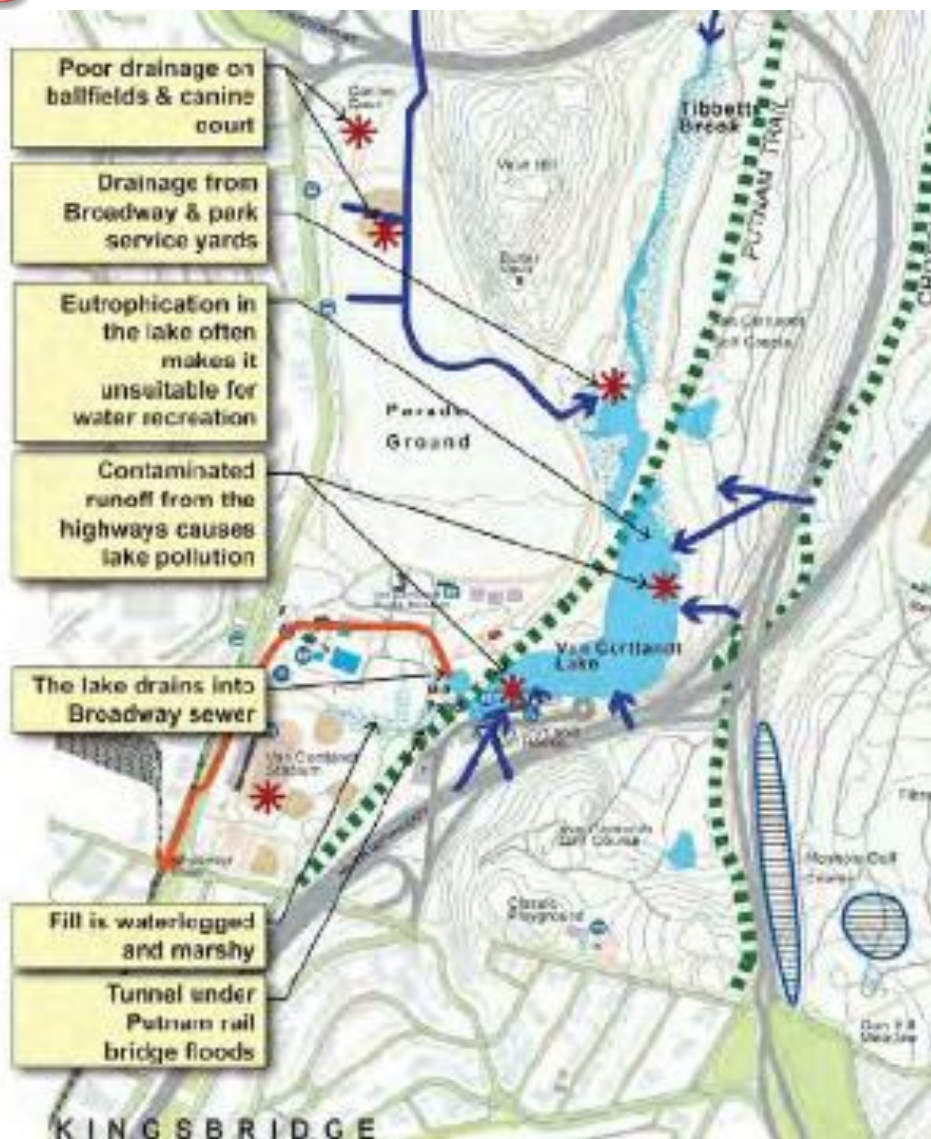
C Van Cortlandt Park Weir and Wetland

Approximately 1.45 mgd flow
into the Broadway sewer

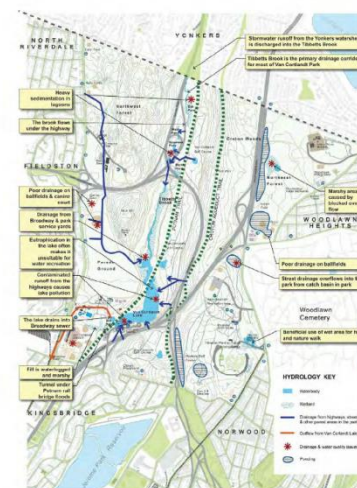




From VCP Master Plan



Tibbets Brook and Park Hydrology



- Tibbets Brook needs to be reconstructed as a continuous series of pools and streams designed for **ecological health and natural appearance**. The DEP Bluebelt project, in design now, will reconnect the brook, deepen and restore the marsh.
- The highways block overland flows and are causing ponding of natural areas and athletic fields.
- The lake needs to be deeper to accommodate diving birds. This will require dredging, perhaps this can be accomplished by the Bluebelt project.
- There is a large pipe that discharges storm water from Broadway, the Parade Ground and the maintenance yard into the pond. This water needs to be cleaned and filtered, and the pipe needs to be concealed.



View of outfall from Broadway and park service yards.



VAN CORTLANDT PARK: MASTER PLAN 2030

JULY 15, 2010

21

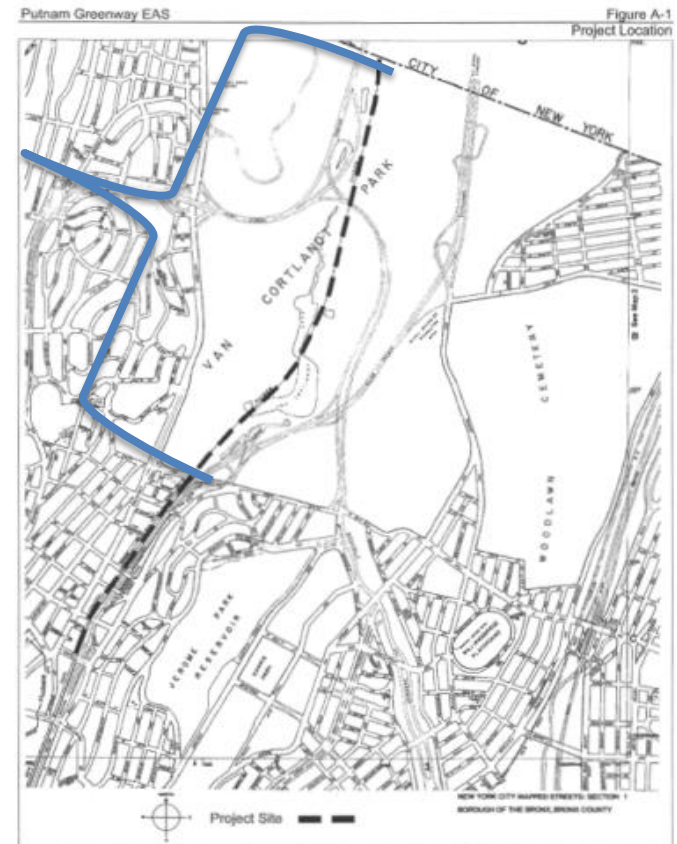
C



Existing condition has stormwater discharging into Van Cortlandt Park waterbodies: Tibbetts Brook, the Wetlands or the lake – the 56 acre NYS Class I Freshwater Wetland, known as Van Cortlandt Park Wetland.

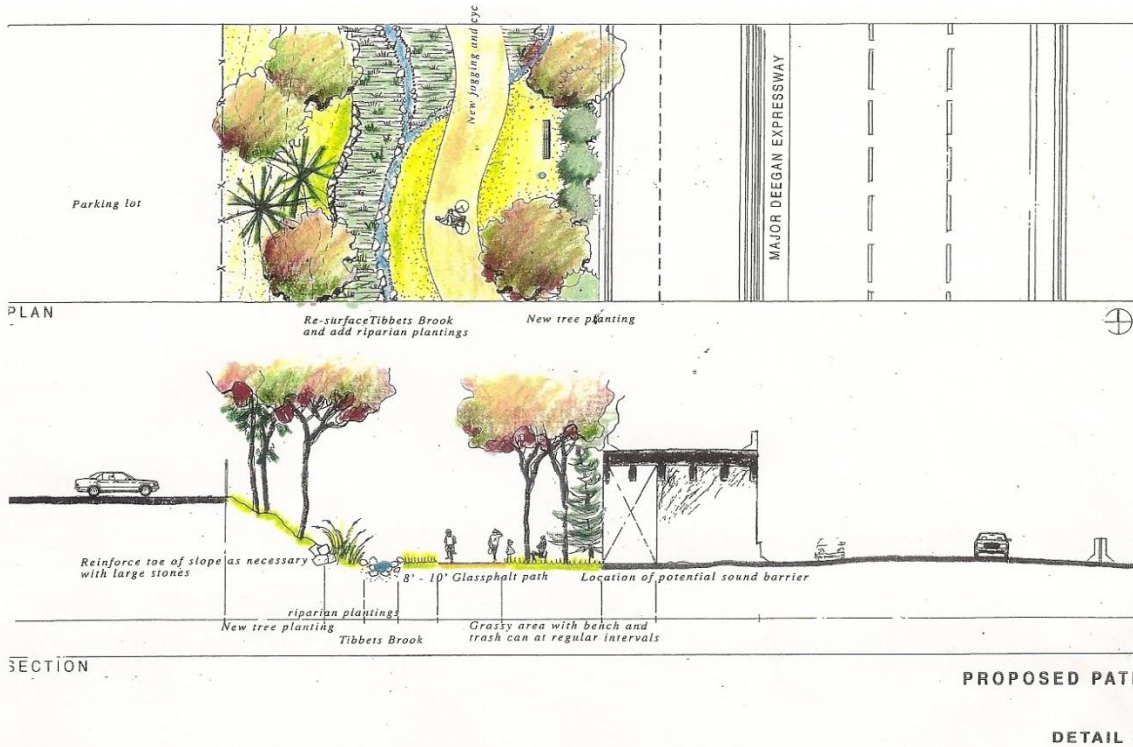
Putnam Trail in the Park

The NEW design for the trail can no longer discharge into the water body. SWPPP must be for design, as well as but not just construction and E&S.



C

South of VCP in the rear yard of Broadway stores and along the Major Deegan



This area is lower than the Broadway stores. It is hard to reach, but it is easy to assume that it floods. During Sandy the Harlem River surged to 238th Street.



	<p>HUDSON RIVER VALLEY GREENWAY B R O N X L I N K</p> <p>Bronx Advisory Committee to the Hudson River Valley Greenway Bronx, New York • 1997</p>	<p>Prototypical Path along the Putnam Rail</p>	<p>GAIL E. WITTMER, ASLA LANDSCAPE ARCHITECT</p> <p>3965 SEDGWICK AVENUE 1C BROOKLYN, NEW YORK 10063 TELEPHONE 718.796.5806</p>
--	---	---	---



What goes into the water



Thank you.