

*Confidential for explanation not presentation*

*per Karen Argenti  
November 2022*

# **Sedgwick and Dickinson**

## **(GI-P Design-3)**

Located between Sedgwick Avenue, Dickinson Avenue and  
Mosholu Parkway,  
in the Borough of Bronx, NY  
Contract GI-P Design-3 Project Schematic Design  
March 2022



## Goals

- Capture 1.25” rainfall event from tributary area
- Create a gateway to the neighborhood, centered around the entrance to a walking path which crosses the median
- Tributary size 18,014 SF and 14,036 gallons runoff from 1.25” rainfall event.
- Provide options for additional community enhancements that could be included outside of the DEP-funded green infrastructure

## Funding Source

- NYCDEP

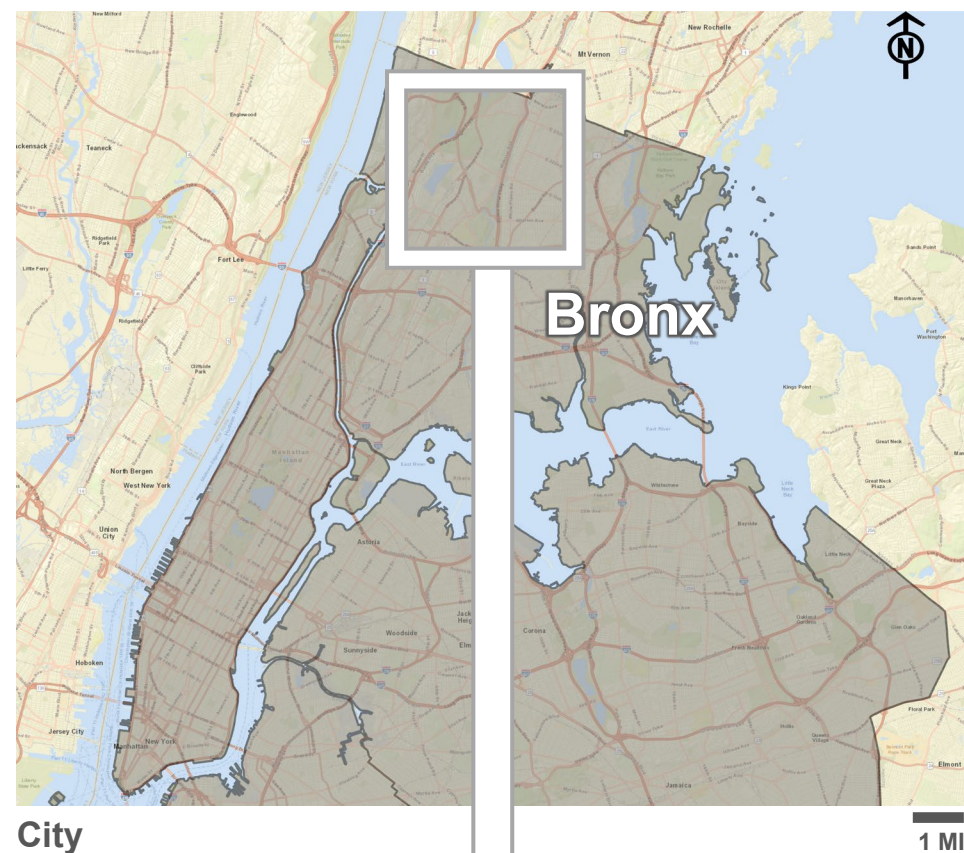
## Project Size

- TDA = 18,014SF; 0.41 acres
- Volume = 2,212 CF; 0.61 greened acres; 16,544 gallons (Capacity Managed)

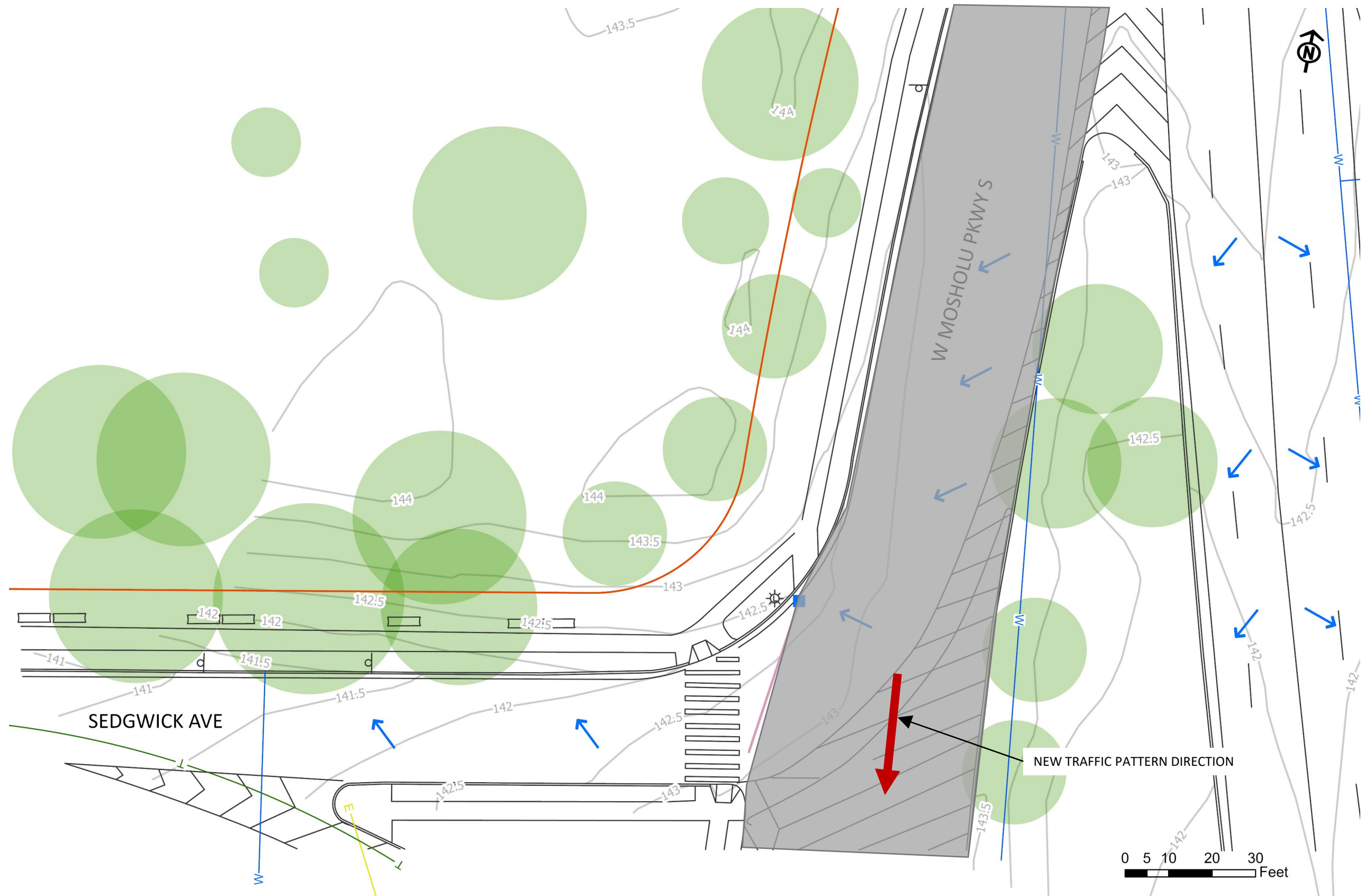
## Cost

- Total Construction Cost (2022) = \$346,588
- Cost per Greened Acre (2022) = \$568,178
- Cost per Gallon (2022) = \$20.95



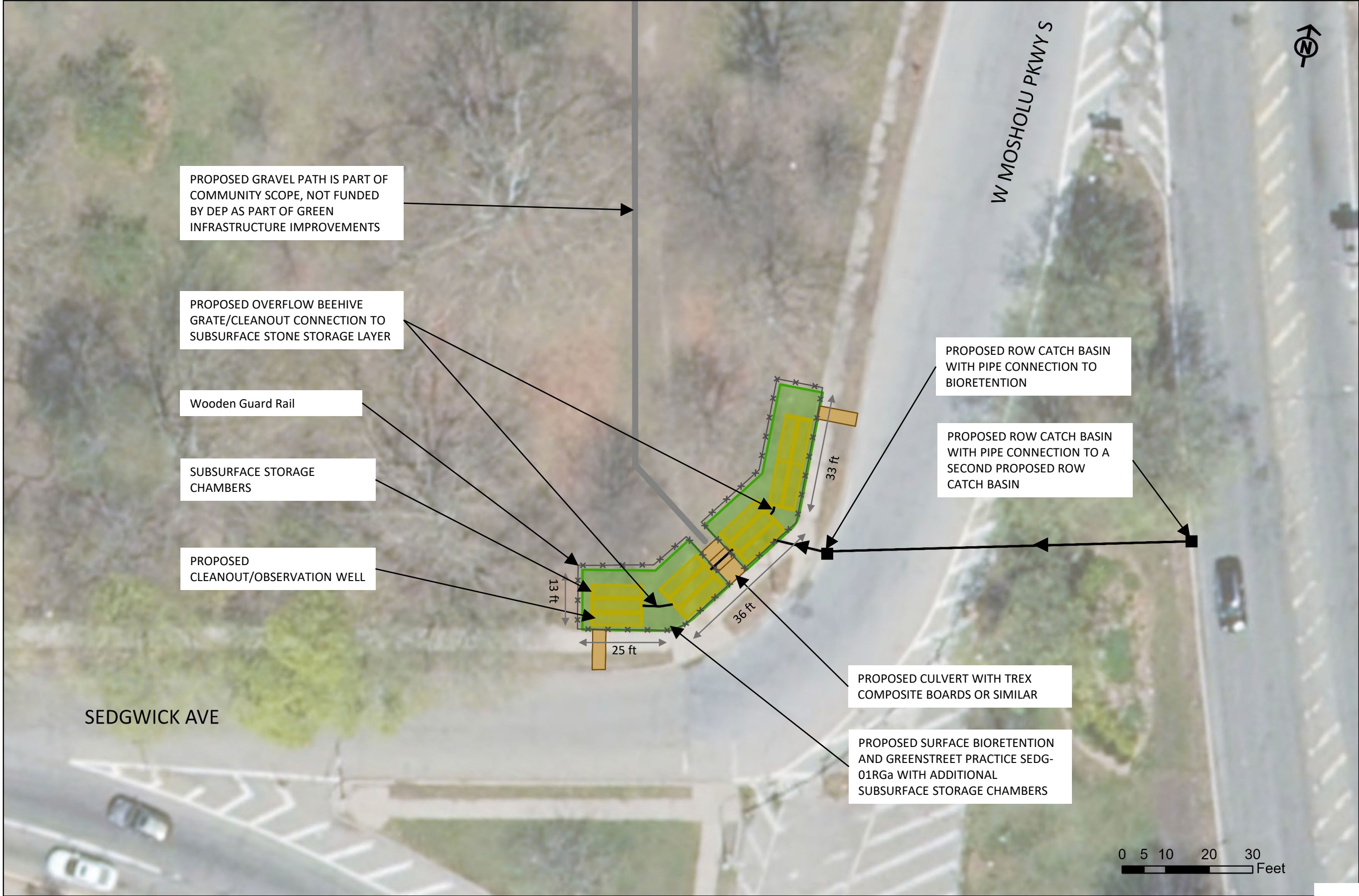






- ### Legend
- Property Boundary
  - Building or Feature Wall Limits
  - Spray Shower Drainage Area
  - S Existing Manhole
  - Existing Yard Drain/Inlet
  - Existing ROW Catch Basin
  - Drainage Piping
  - DEP Sewer Line
  - Telephone Service Line
  - Fire Service Line
  - Water Service Line
  - Electrical Service Line
  - Gas Service Line
  - Communication Service Line
  - Overhead Utility Line
  - Unknown Valve
  - W Water Valve
  - ➔ Surface Flow Direction
  - Contour Lines
  - Existing Tree Canopy









#### NOTES

1. GRAVEL PATHWAY, CURB STOPS, AND RESEEDING NOT INCLUDED AS PART OF DEP-FUNDED GREEN INFRASTRUCTURE IMPROVEMENTS.

**GI-P Design-3**

**Sedgwick and Dickinson | Proposed Design Rendering**



# Planting Plan

Plant Type	Common Name	Botanical Name	Quantity
Shrub	Black Chokeberry	Aronia Melanocarpa	27
Shrub	Snow Mound Nippon Spiraea	Spiraea Nipponica	58
Perennials	Baby Joe Joe Pye Weed	Eupatorium Dubium	103
Perennials	Walker’s Low Catmint	Nepeta Faasenia	146
Grasses	Heavy Metal Switchgrass	Panicum Virgatum	170





# Future Community Improvements

Gravel pathway: \$35,400

Curb Stops: \$12,100

Reseeding: \$11,700

Total Cost: \$59,200

- NOTES
- 1. GRAVEL PATHWAY, CURB STOPS, AND RESEEDING NOT INCLUDED AS PART OF DEP-FUNDED GREEN INFRASTRUCTURE IMPROVEMENTS.

