

Legend

- Bioretention and ROWSGS
- Subsurface Storage
- Bioretention TDA
- Proposed Wooden Barrier Rail
- Proposed Inlet
- Proposed Manhole
- Proposed Cleanouts & Beehive Grates
- Proposed Drainage Piping
- Site Access
- Surface Flow Direction
- Contour Lines
- Construction Limit Line
- Staging Area
- Restoration Area
- Borehole/PT Location

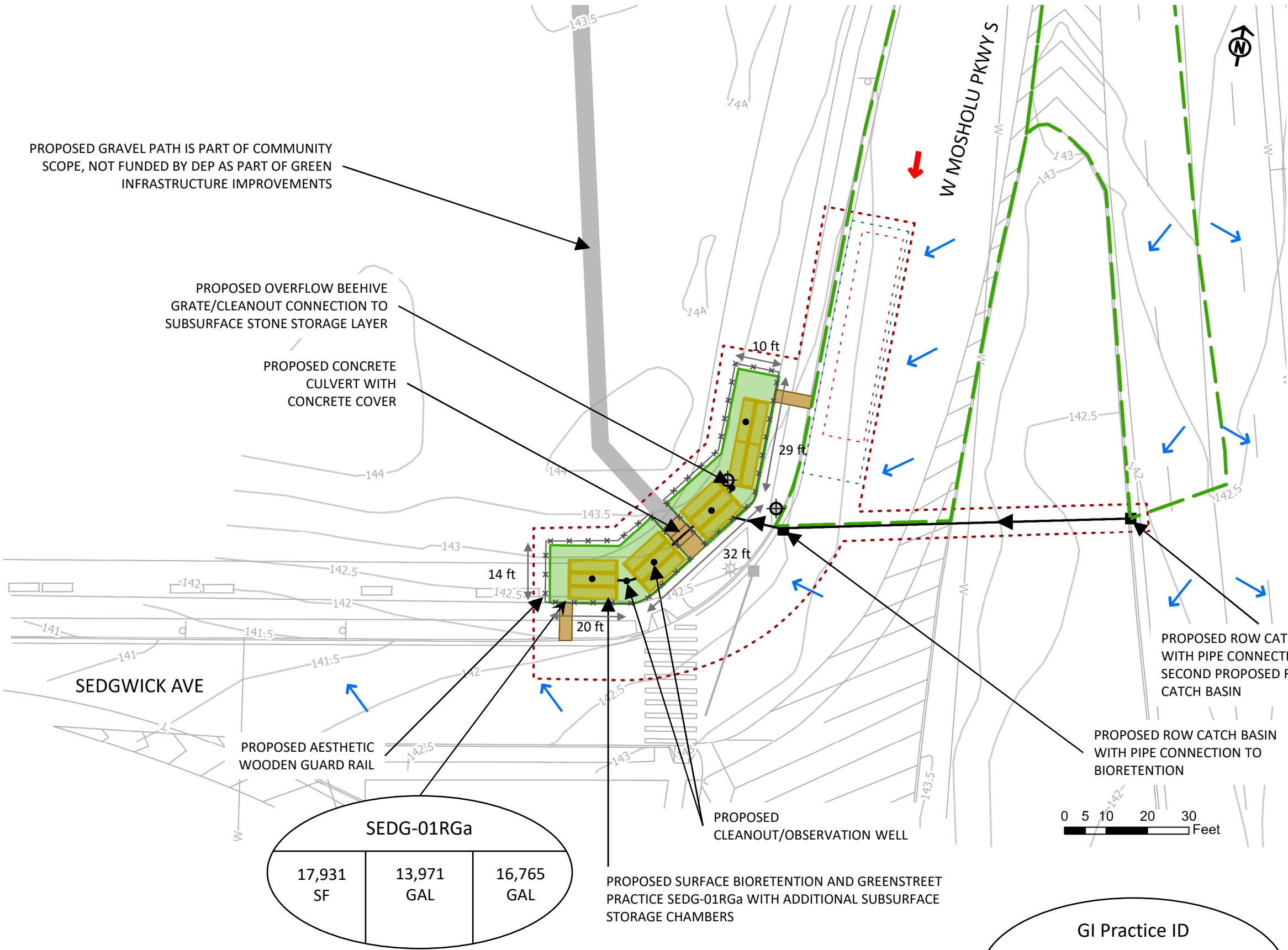
NOTES

- BORING AND PERMEABILITY TEST RESULTS FOR SEDGWICK DICKINSON SHOWED FAVORABLE CONDITIONS FOR INFILTRATION. THE PRACTICE SHOWN IS RETENTION-BASED.
- 01RGa MANAGES TDA SEDG-01 AND SEDG-02. 01RGa INCLUDES TWO PROPOSED CATCH BASINS WITH TWO PIPES, A CONVEYANCE PIPE CROSSING MOSHOLU PARKWAY AND AN INFLOW PIPE TO THE GREEN INFRASTRUCTURE. UPON REACHING MAXIMUM WATER SURFACE ELEVATION, FLOW WILL BYPASS THE PROPOSED CATCH BASINS AND CONTINUE TO THE EXISTING DRAINAGE NETWORK.
- ABANDONED UTILITIES TO BE COORDINATED WITH DEP. ABANDONED UTILITIES SHALL BE REMOVED IF ENCOUNTERED DURING CONSTRUCTION.

Construction Cost Estimates

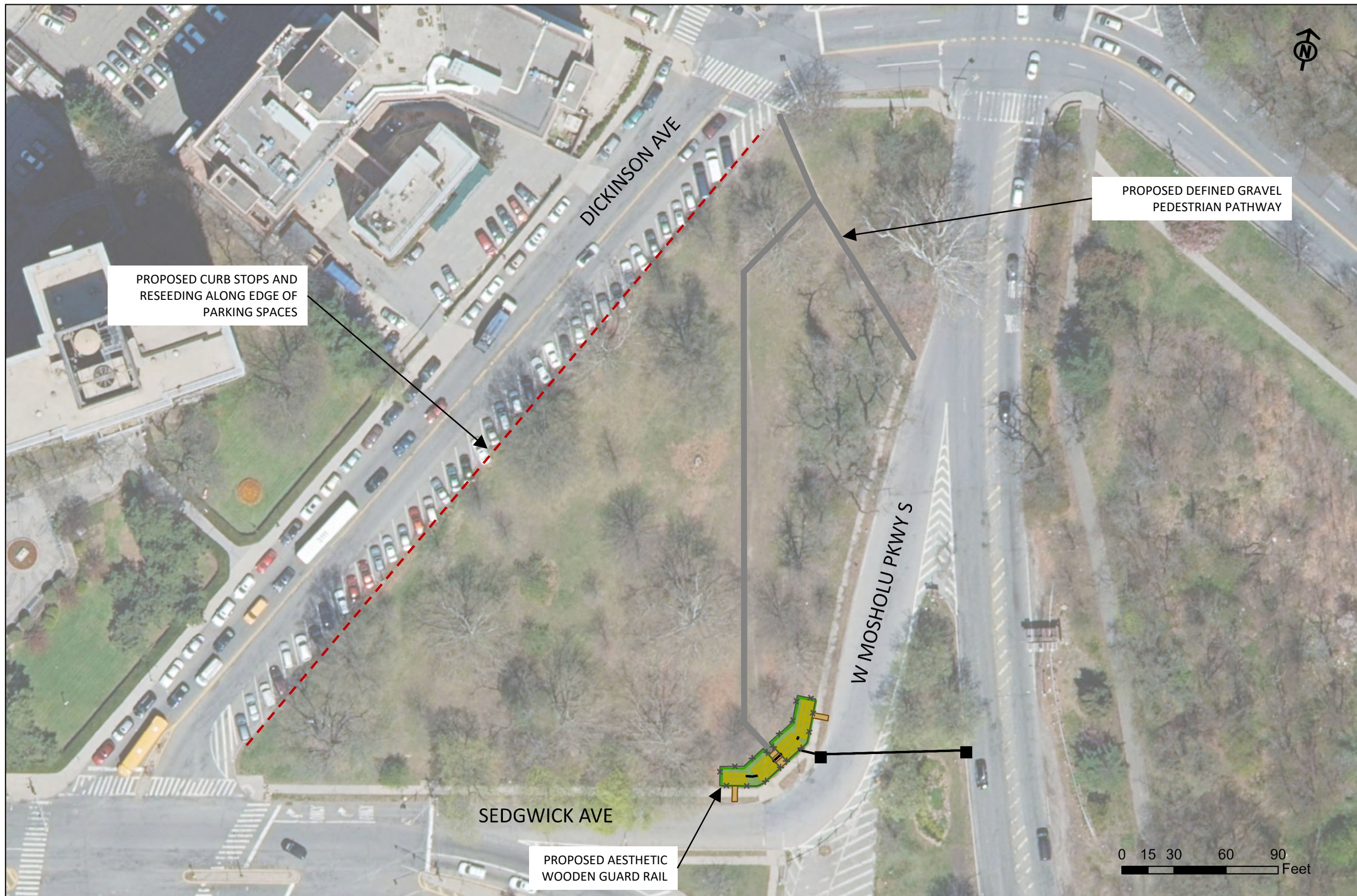
SEDG-01RGa	\$294,675
Cost Per Gallon	\$17.58
Cost per Greened Acre	\$475,282

Permeability > 0.5 in/hr



GI Practice ID		
Tributary Area (SF)	Volume of 1.25" Storm (gal)	Capacity Managed (gal)





## NOTES

1. GRAVEL PATHWAY, CURB STOPS, WOODEN GUARD RAIL AND RESEEDING NOT INCLUDED AS PART OF DEP-FUNDED GREEN INFRASTRUCTURE IMPROVEMENTS.