

## Air Quality Permit Renewal for the Harlem River Yards “Peaker Plant”

New York State Department of Environmental Conservation are asking for comments on the **4<sup>th</sup> 5-year renewal Air Quality Permit for a 79.9 Mega Watts** for the so called “Peaker Plant” on the Harlem River Yards (HRY) in Mott Haven in the South Bronx.

A “**Peaker Plant**” is a temporary power plant that was supposed to be used during the times when there is not enough energy, historically in the summer months.

The tall red line, in Figure 1 **below**, is up to 900 MWh – ten times the maximum allowed. The state’s cumulative vulnerability index, Figure 4 to the **right**, identifies the top two as the Harlem River Yards, and the Hell Gate “Peaker” plant in Hell Gate in Port Morris.

Year	Summer Capacity (MW)	Total Gross Load (MWh)	Capacity Factor	Days Operating	Days Operating <5 Hr* (% of operating days)	Days Operating 5-10 Hr* (% of operating days)	Days Operating >10 Hr* (% of operating days)
2018	79.9	44,612	6%	131	57 (44%)	28 (21%)	46 (35%)
2019	79.9	30,883	4%	124	68 (55%)	22 (18%)	34 (27%)
2020	79.9	61,309	9%	192	95 (49%)	37 (19%)	60 (31%)
2021	79.9	76,544	11%	227	98 (43%)	54 (24%)	75 (33%)
2022	79.9	111,749	16%	211	55 (26%)	47 (22%)	109 (52%)

\*Note: Operation time represents the sum of operating time for both generators (HR01 and HR02)

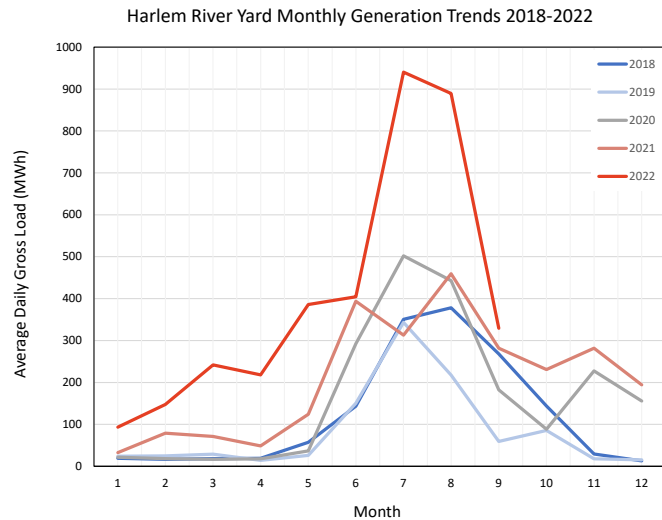


Figure 1 HRY Monthly Generation Trends queried from <https://campd.epa.gov/data/custom-data-download>

Energy Storage Peaker Plant Replacement Project  
<https://www.psehealthenergy.org/our-work/energy-storage-peaker-plant-replacement-project/>  
 New York, Technical and Glossary

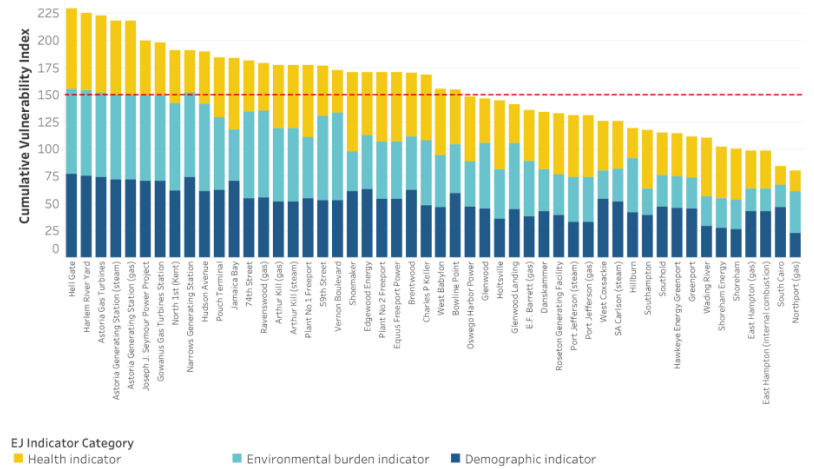
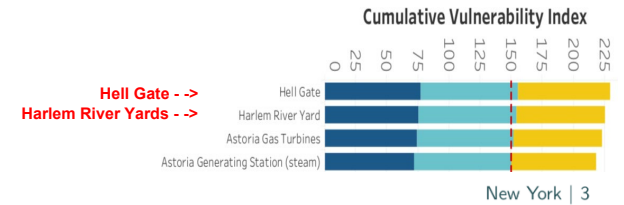


Figure 4: The cumulative vulnerability index reflects a set of environmental, human health and demographic indicators for populations living within three miles of each plant. The score is based on a comparison of indicators to statewide values: if a plant ranked at the median percentile for all indicators, it would score 150, which is indicated by the red dashed line.



2/23/2023KA

